

TECHNICAL DETAILS

westex.

FLOORING EXCELLENCE

GRAPHICS COLLECTION



westex.
DYE SERVICE

Create your own
bespoke colour with
our unique dye service





westex.
DYE SERVICE

Create your own
bespoke colour with
our unique dye service

GRAPHICS COLLECTION



Choose from our 18 broadloom patterns and any combination of 2 or 3 colours of yarn to create your own bespoke carpeting solution.

Available in 2 widths:
3.66m (12ft) & 4.00m

Method of Manufacture:
2 Fold Tufted Cut Pile

Pile Material:
80% Wool 20% Nylon

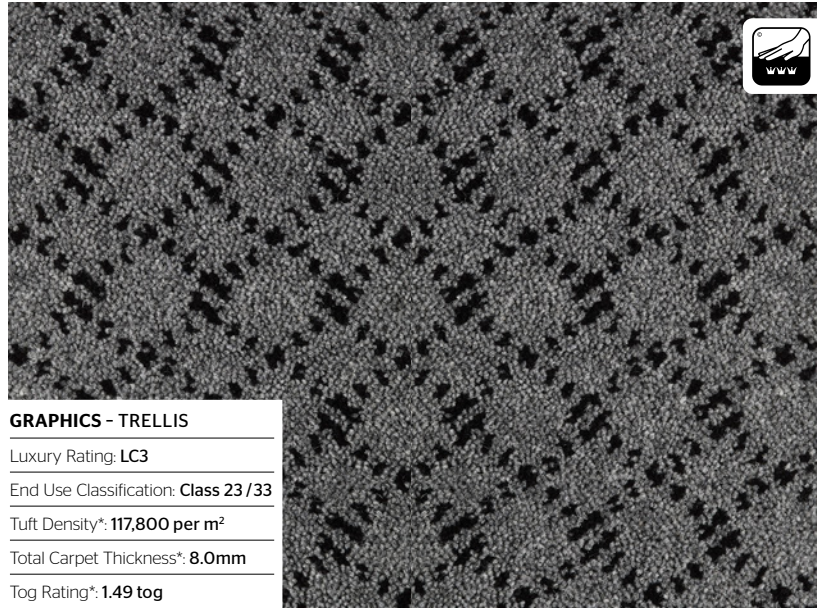
Colour Palette:
120 Standard Colours - Available in All Patterns

IMO Certified
IMO FTP Code 2010 Part 2 & Part 5

Available on Request



2 COLOUR PATTERNED DESIGNS



GRAPHICS - TRELLIS

Luxury Rating: **LC3**

End Use Classification: **Class 23 /33**

Tuft Density*: **117,800 per m²**

Total Carpet Thickness*: **8.0mm**

Tog Rating*: **1.49 tog**

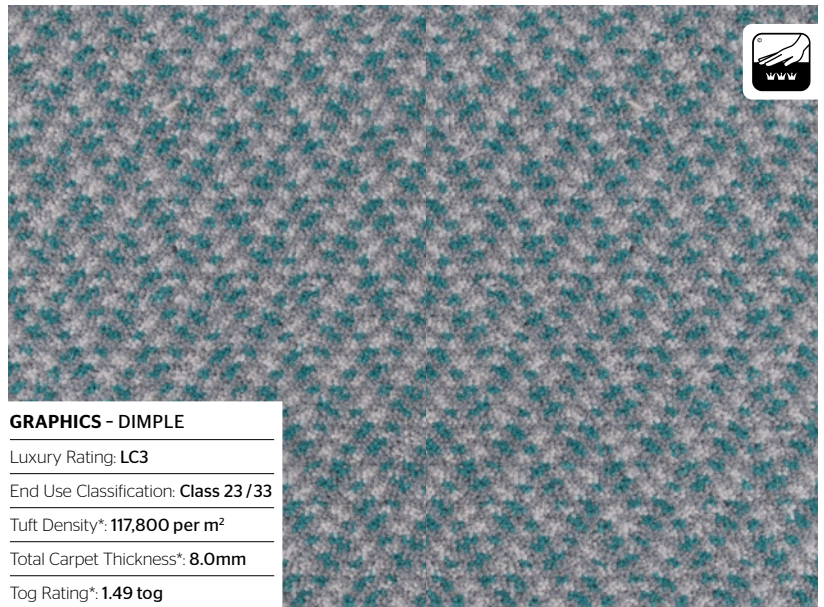


Black



Ebony

3 COLOUR PATTERNED DESIGNS



GRAPHICS - DIMPLE

Luxury Rating: **LC3**

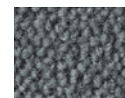
End Use Classification: **Class 23 /33**

Tuft Density*: **117,800 per m²**

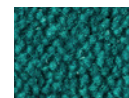
Total Carpet Thickness*: **8.0mm**

Tog Rating*: **1.49 tog**

*+/- 10% commercial tolerance



Zinc



Kingfisher



Mercury



Westex Carpets Limited.
Castle Mills, Moorend, Cleckheaton, West Yorkshire, BD19 3PS, United Kingdom
Tel: +44 (0)1274 861334 Fax: +44 (0)1274 873266
westexflooring.com info@westexflooring.com

westex.

FLOORING EXCELLENCE



westex.
DYE SERVICE

Create your own
bespoke colour with
our unique dye service

GRAPHICS COLLECTION

18 PATTERN OPTIONS



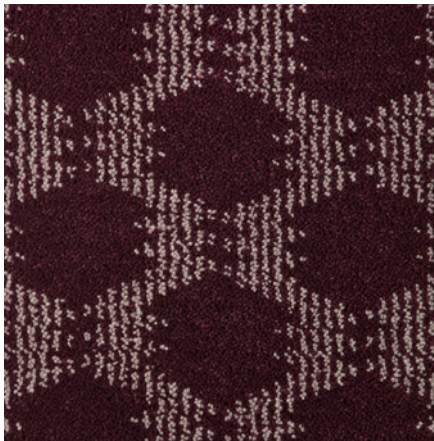
CASTILLI



MEDLEY



MATRIX



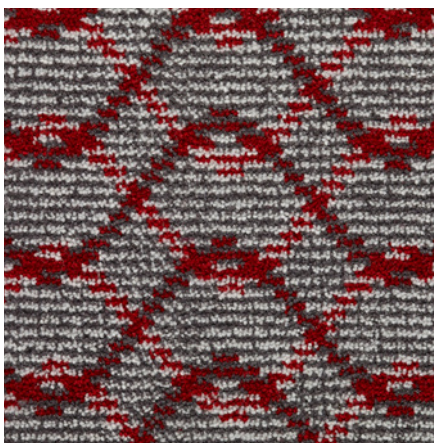
LINK



FLOW



ARGYLE



FREQUENCY



TRELLIS



LANES



Westex Carpets Limited.
Castle Mills, Moored, Cleckheaton, West Yorkshire, BD19 3PS, United Kingdom
Tel: +44 (0)1274 861334 Fax: +44 (0)1274 873266
westexflooring.com info@westexflooring.com

westex.

FLOORING EXCELLENCE



westex.
DYE SERVICE

Create your own
bespoke colour with
our unique dye service

GRAPHICS COLLECTION

18 PATTERN OPTIONS



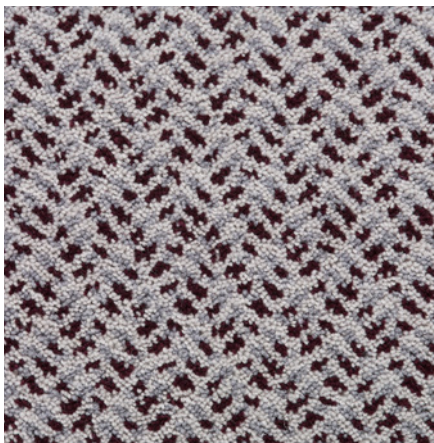
GENETIC



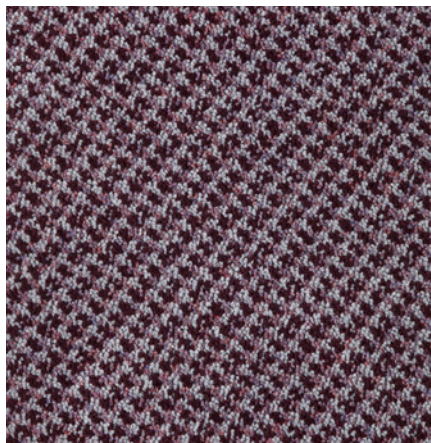
FORMAT



BARCODE



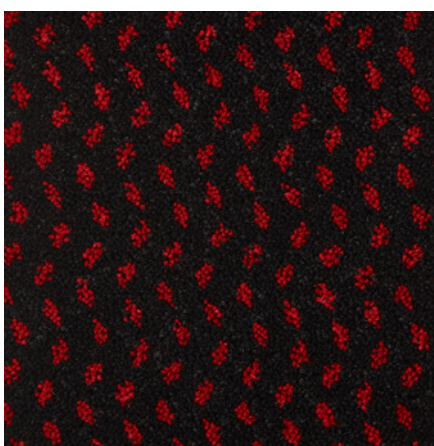
DIMPLE



WAFFLE



DOGTOOTH



WAVE



MENUET



RIPPLE



Westex Carpets Limited.
Castle Mills, Moored, Cleckheaton, West Yorkshire, BD19 3PS, United Kingdom
Tel: +44 (0)1274 861334 Fax: +44 (0)1274 873266
westexflooring.com info@westexflooring.com

westex.

FLOORING EXCELLENCE

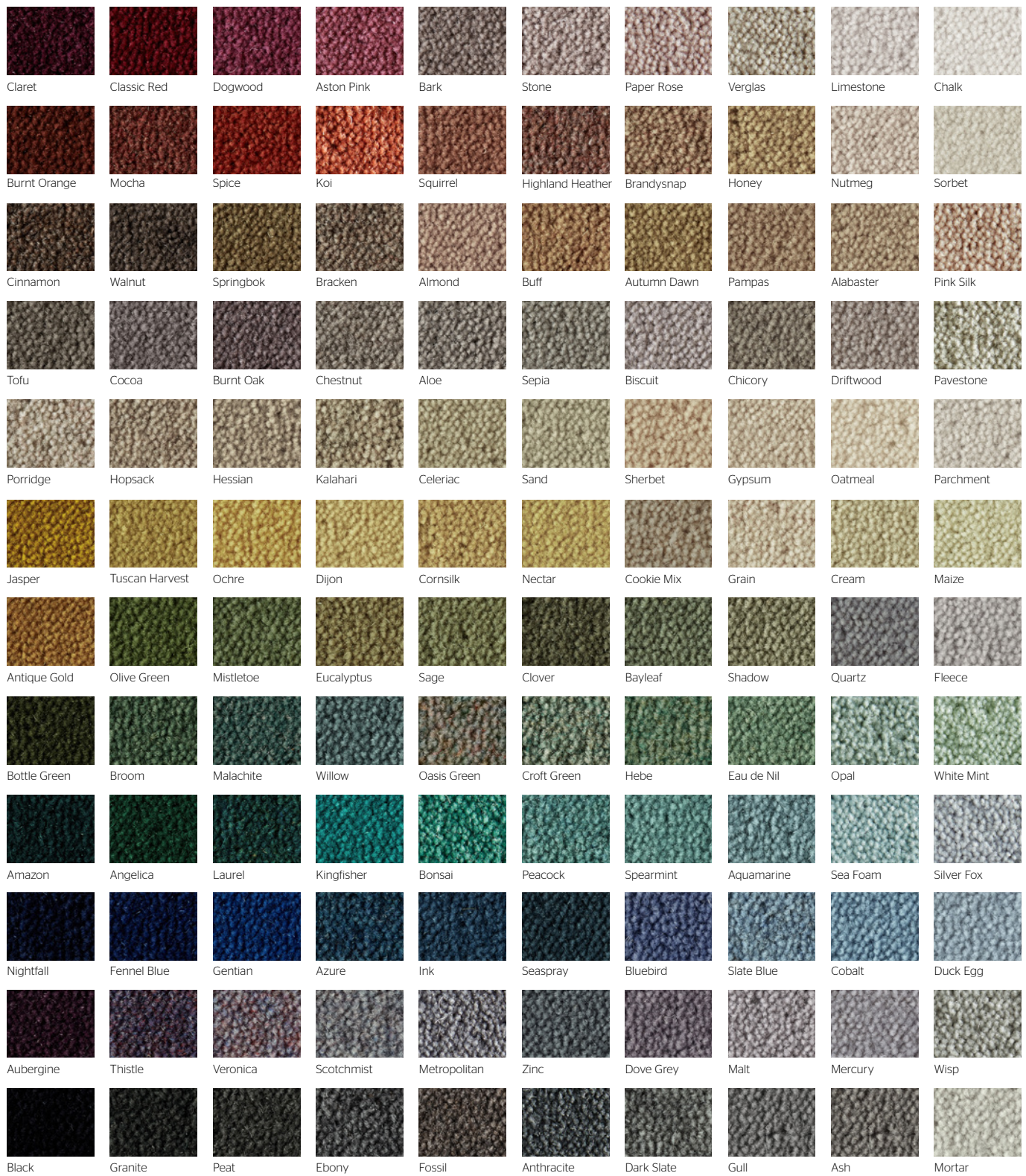


westex.
DYE SERVICE

Create your own
bespoke colour with
our unique dye service

GRAPHICS COLLECTION

120 COLOUR OPTIONS

















Westex Carpets Limited.
Castle Mills, Moored, Cleckheaton, West Yorkshire, BD19 3PS, United Kingdom
Tel: +44 (0)1274 861334 Fax: +44 (0)1274 873266
westexflooring.com info@westexflooring.com

westex.

FLOORING EXCELLENCE

GRAPHICS COLLECTION

Technical Specification

Luxury Rating	BS EN 1307:2014	LC3	
End Use Classification	BS EN 1307:2014	Class 23 Heavy Domestic Use Class 33 Heavy Commercial Use	 
Hexapod 4000	BS EN 1307:2014	3.5	
Hexapod 12000	BS EN 1307:2014	2.5	
Roll Widths		Available in 2 sizes: • 3.66m (12ft) • 4.00m	
Roll Length		Customisable (80m ² +)	
Method of Manufacture		2 Fold Tufted Cut Pile, 1/8" Gauge	
Tuft Density*	ISO 1763	117,800 per m ²	
Pile Material		80% Wool 20% Nylon	
Pile Height above Backing*		6.0mm	
Total Carpet Thickness*		8.0mm	
Primary Backing		Polypropylene	
Flammability	BS4790 Hot Nut Test	Low Radius of Char	
Reaction to Fire	BS EN 13501	Class C _{fl} -s1	
Delamination	BS ISO 11857	Pass Minimum 15.00 (N)	
Thermal resistance	BS4745	1.49 tog	
Dimensional Stability	ISO 2551-1981 (2010)	Pass Pass if shrinkage is equal to or less than 1.2% and extension less than or equal to 0.5%	
Colour Fastness: Light	BS EN ISO -B02	4-5	
Colour Fastness: Shampooing	BS ISO -18168	4	
Colour Fastness: Rubbing	BS EN ISO -X12	4	
Electrical Resistance	ISO 10965:2011	Pass Does not exceed 10Ω	
Sound Absorption		Class C with Underlay	
Underfloor heating system		Suitable to a max. 27°C Please check with manufacturers guidelines	
Guarantee		6 Years	
IMO Certified	IMO FTP Code 2010 Part 2 & Part 5	Pass Available on request	
CE Mark	EN 14041		

*Commercial Tolerance +/- 10%



Westex Carpets Limited.
Castle Mills, Moorend, Cleckheaton, West Yorkshire, BD19 3PS, United Kingdom
Tel: +44 (0)1274 861334 Fax: +44 (0)1274 873266
westexflooring.com info@westexflooring.com

westex.

FLOORING EXCELLENCE



westex.
DYE SERVICE

own your colour.

We are very proud of our extensive standard colourbank, which we consider to be second to none. We also offer you limitless bespoke colours, as we have our own Dye House and control the whole manufacturing process. Special Dyes must meet your approval before full production is started.*

THE UNIQUE ADVANTAGES OF A WESTEX CARPET



Allergy Guard

Allergy Guard protects against pests, bacteria and allergens whilst Fresh Guard inhibits mould and neutralises pet odours. All Westex Carpets have an anti-dust mite treatment applied to protect against house dust mites, mould fungi and bacteria and their allergens, fresh guard is also part of the construction of this treatment.

The active ingredient in the treatment does not allow the debris (human skin, hair etc.) to decay into the food that the dust mites thrive upon, thus there is no environment for them to exist or thrive in. This will also inhibit the bacteria and mould development. Thorough vacuuming will then maintain the cleanliness of the carpet.



Fresh Guard

This treatment has been subjected to the full rigours of scientific testing, both toxicologically and ecologically, to establish that there is no harm to human or pet health, or the environment. It is tested to OECD 404 and 406 to qualify as no irritation or sensitisation.

These treatments combine with the wool fibre on a permanent basis and will last the life time of the carpet.



Stain-Resist

All Westex Carpets have a Stain Resist treatment applied. Stain Resist is not a stain blocker. Stain Resist slows the stain penetration down, giving time to get the carpet cleaned. The stain resist formula bonds with the fibre to provide protection against dirt and damp, therefore making caring for the carpet easier.

This treatment prevents stains from penetrating the fiber and they temporarily remain locked on the surface so they can easily be removed. The breathable properties of the fibre are not affected.

Shampooing and professional carpet cleaning products cannot break the bonds between the active chemical and fibre. The performance of the Stain Resist will last 5 years, subject to normal, reasonable use.

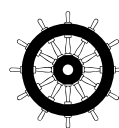
Stain Resist is free from CFCs and is dermatologically tested. The Stain Resist polymers show no toxicity even at the highest applied levels and no bioavailability, metabolism or hydrolysis.



Moth Guard

All Westex carpets have a mothproofing treatment applied. Mothproofing protects your carpet against the attack of both moths and other wool eating insects. The active ingredient in the moth-proof makes the keratin (a protein found in wool) that moths, bugs and other insects thrive upon, indigestible. They literally starve as their digestive systems are unable to convert the keratin they have eaten into usable food.

The moth-proof combines with the wool fibre on a permanent basis and will last the life time of the carpet. Westex's award winning moth-proof process has had scientific testing, both toxicologically and ecologically, to establish that there is no harm to human or pet health with no effluent waste.



*A minimum order quantity of 40m² in any one width applies.



Westex Carpets Limited.
Castle Mills, Moorend, Cleckheaton, West Yorkshire, BD19 3PS, United Kingdom
Tel: +44 (0)1274 861334 Fax: +44 (0)1274 873266
westexflooring.com info@westexflooring.com

westex.

FLOORING EXCELLENCE